



### Product Description

Mouse Embryonic Fibroblast (MEF) Feeder Cells are widely used to support the growth and maintenance of both mouse and human embryonic stem cells (ESCs) and induced pluripotent stem cells (iPSCs). MEFs provide essential extracellular matrix proteins, cytokines, and growth factors that help sustain pluripotency and prevent spontaneous differentiation.

We offer several types of MEF feeders to suit diverse experimental needs. CF1 MEF feeders are the standard and the most commonly feeders for routine ESC/iPSC culture. Neomycin-resistant (NeoR) MEFs allow efficient co-culture when G418 selection is required, enabling stable transgene expression. DR4 MEFs, resistant to neomycin, hygromycin, puromycin, and 6-thioguanine, support more stringent selection strategies.

All feeder cells are rigorously tested, mitotically inactivated, and optimized to ensure reliable, reproducible stem cell culture.

### Stability and Storage

Upon receipt, immediately transfer the cells from dry ice to liquid nitrogen storage, and maintain them in liquid nitrogen until ready for experimental use.

### Shipping

Cryopreserved cells are shipped on dry ice.

### Product Use

The products are for research use only. They are not approved for human or animal use, or for application in in vitro diagnostic procedures.

### Contact Us

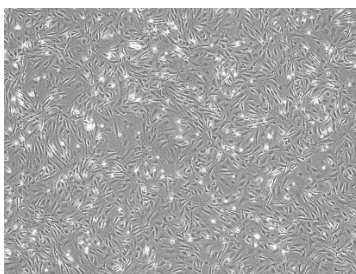
[www.i-linkbio.com](http://www.i-linkbio.com)  
[sales@i-linkbio.com](mailto:sales@i-linkbio.com)

## Product Datasheet: MEF Cells (untreated)

### Quality Control:

<b>Catalog Number</b>	<b>ILF (See CoA)</b>
<b>Organism</b>	<i>musculus</i>
<b>Donor</b>	See CoA for the detailed information
<b>Product Format</b>	Cryopreserved
<b>Culture Properties</b>	Adherent
<b>Total Cell Number</b>	1 x 10 <sup>6</sup> cells/vial
<b>Viability</b>	>90%
<b>Human Pathogen</b>	Negative
<b>Bacterial, Fungi, Mycoplasma</b>	Negative

### Representative Data:



### MEF Cell Thawing and Plating Protocol:

1. Thaw the cells rapidly in a 37 °C water bath.
2. Transfer the thawed cells into a 15 mL conical tube.
3. Slowly add 2 mL of MEF cell culture medium (DMEM + 10% FBS supplemented with antibiotics).
4. Centrifuge at 200 × g for 2 minutes at room temperature.
5. Carefully aspirate the supernatant.
6. Re-suspend the cell pellet in 5mL of MEF cell culture medium.
7. Seed the cells onto T25 flask.  
Note: we recommend using flasks pre-coated with 0.1% gelatin.
8. Gently distribute the cells evenly across the flask.
9. Incubate overnight at 37 °C in a CO<sub>2</sub> incubator.
10. Cells will be ready for passaging in 3–4 days.  
Note: A 1:3 split ratio is recommended.
11. Once confluent, treat the cells with mitomycin C, X-ray, or gamma-ray.
12. Treated cells can be used directly as feeder cells or cryopreserved for future use.

### Related Products:

These MEF cells are specifically prepared for production of MEF feeder cells (Please find our ready-to-use MEF feeder cells on [www.i-linkbio.com](http://www.i-linkbio.com). Catalogue numbers: ILF-1001, ILF-1002, ILF-1003, ILF-1004, ILF-2001, ILF-2002, ILF-2003, ILF-2004, ILF-3001, ILF-3002, ILF-3003, ILF-3004).